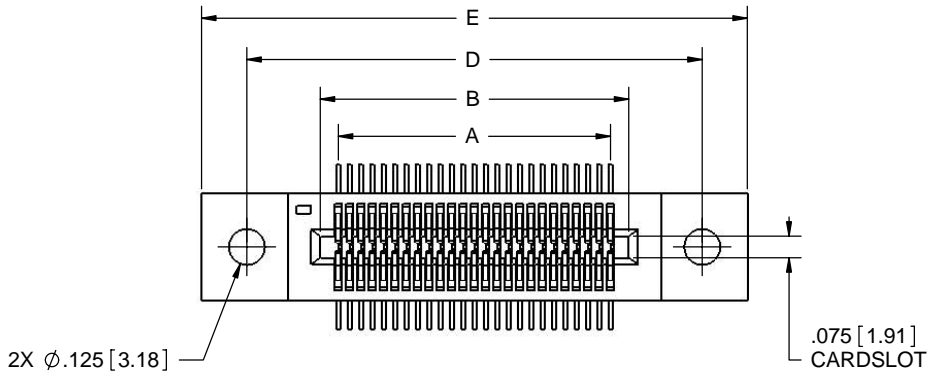


REVISIONS				
REV.	ECO. NO	DESCRIPTION	DATE	BY
A	866	INITIAL RELEASE	12/19/2005	HT
B	1393	TABULATE MATERIALS	6/19/2007	MNH



**MATERIAL (INSULATOR/CONTACT)**

R = PPS/PHOSPHOR BRONZE  
OPERATING TEMP: -65°C TO +125°C

G = PA9T/PHOSPHOR BRONZE  
OPERATING TEMP: -65°C TO +125°C

A = PPS/BERYLLIUM COPPER  
OPERATING TEMP: -65°C TO +150°C

J = PA9T/BERYLLIUM COPPER  
OPERATING TEMP: -65°C TO +150°C

**PART NUMBER CODING**

**MOUNTING STYLE**

D = FLUSH MOUNTING  
N = NO MOUNTING EARS  
T = FLUSH MTG. WITH THRD INSERT  
R = BOARD LOCKS  
S = SIDE MOUNTING

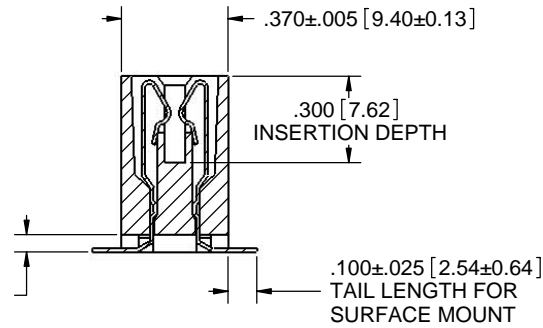
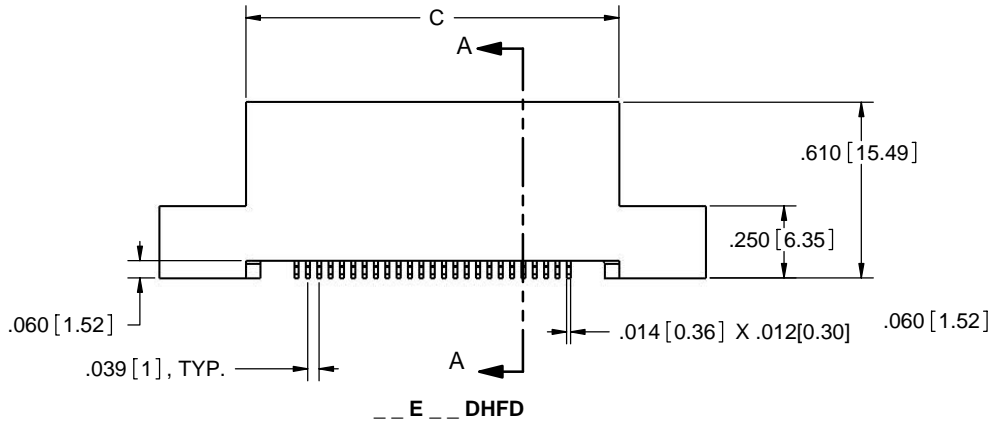
**NUMBER OF POSITIONS (CONTACTS PER ROW)**

**PLATING**

ALL PLATINGS HAVE .000050" NICKEL UNDERPLATE

CONTACT SURFACE TERMINATION

B= .000010" GOLD .000100" PURE TIN, MATTE  
C= .000030" GOLD .000100" PURE TIN, MATTE



**SECTION A-A**

**NOTES:**

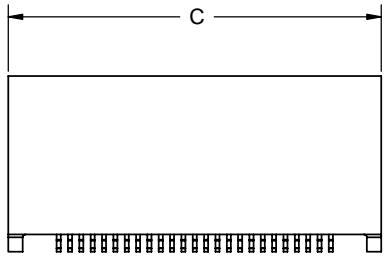
- INSULATOR MATERIAL: SEE PART NUMBER CODING
- CONTACT MATERIAL: SEE PART NUMBER CODING
- PLATING: SEE PART NUMBER CODING
- OPERATING TEMPERATURE: SEE PART NUMBER CODING
- PROCESSING TEMP: 260°C FOR 120 SECONDS MAX
- UL FLAMMABILITY RATING: 94V-0
- VOLTAGE RATING: 175 VDC MINIMUM AT SEA LEVEL.
- CURRENT RATING: 1 AMP PER CONTACT PAIR
- VOLTAGE DROP: 30 MILLI VOLT AT RATED CURRENT
- INSULATION RESISTANCE: 5000 MEGA OHM
- CONNECTOR IDENTIFICATION: THE PART SHALL BE MARKED WITH A PART NUMBER AND BARCODE
- BOARD THICKNESS ACCOMMODATED: .062 ± .008" [1.57]
- BOARD INSERTION FORCE: 16 OZ MAX PER CONTACT PAIR WHEN USING A .062" [1.57] TEST BLADE. INTERNAL INSPECTION TO BE PER SULLIN'S WORK INSTRUCTION W17.3-01.
- BOARD WITHDRAWAL FORCE: 1 OUNCE MINIMUM PER CONTACT PAIR USING .062" [1.57] PCB



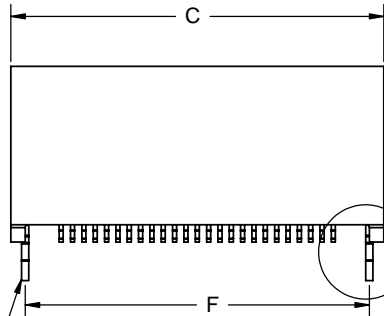
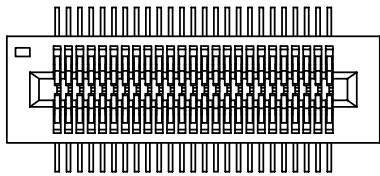
RoHS COMPLIANT

**CUSTOMER COPY**

UNLESS OTHERWISE SPECIFIED: DIMENSIONS ARE IN INCHES[MM]		DATE	NAME
TOLERANCES: ANGULAR: ± 1° XX = ± .02 [ .508] .XXX = ± .005 [ .1270] .XXXX = ± .0005 [ .0127] PARENTHEICAL INFORMATION IS FOR REFERENCE ONLY		12/19/2005	HT
THE INFORMATION HEREIN CONTAINS PROPRIETARY INFORMATION OF SULLINS ELECTRONICS AND IS NOT TO BE REPRODUCED, USED OR DISCLOSED TO OTHERS FOR ANY PURPOSE EXCEPT AS SPECIFICALLY AUTHORIZED IN WRITING BY AN OFFICER OF SULLINS ELECTRONICS.			
INTERPRET DIMENSIONS AND GEOMETRIC TOLERANCING PER: ANSI Y14.5-1984		SIZE	DWG. NO
		C	C10646
		REV	B
SCALE: 3:1		SHEET 1 OF 3	

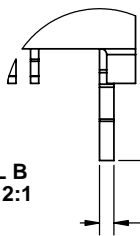
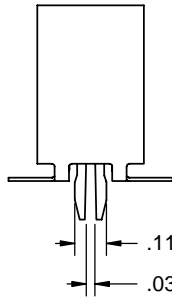


-- E -- DHFN

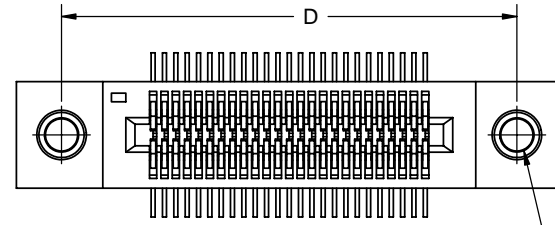


METAL BOARD LOCK

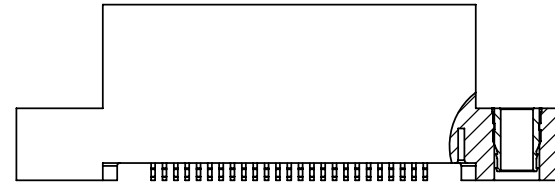
-- E -- DHFR



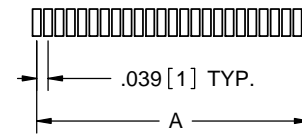
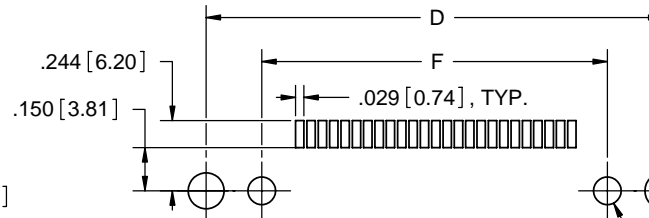
DETAIL B  
SCALE 2:1



2X #4-40  
THREADED INSERT



-- E -- DHFT



2X  $\phi$ .125 [3.18]  
OPTIONAL FOR  
'D' AND 'T' MTGS.

2X  $\phi$ .096 [2.44]  
OPTIONAL FOR 'R' MTG.

PCB LAYOUT  
CONNECTOR SIDE

# CUSTOMER COPY



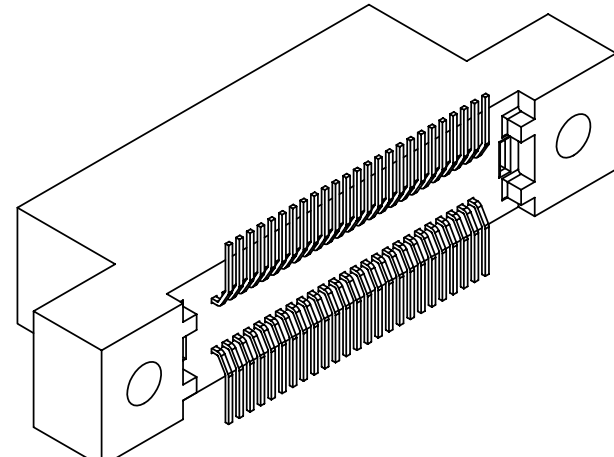
RoHS COMPLIANT

UNLESS OTHERWISE SPECIFIED:  
DIMENSIONS ARE IN INCHES[MM]  
TOLERANCES:  
ANGULAR:  $\pm 1^\circ$   
XX =  $\pm .02$  [508]  
.XXX =  $\pm .005$  [1270]  
.XXXX =  $\pm .0005$  [0127]  
PARENTHETICAL INFORMATION IS FOR  
REFERENCE ONLY  
INTERPRET DIMENSIONS AND GEOMETRIC  
TOLERANCING  
PER: ANSI Y14.5-1984

DATE	NAME
12/19/2005	HT
THE INFORMATION HEREIN CONTAINS PROPRIETARY INFORMATION OF SULLINS ELECTRONICS AND IS NOT TO BE REPRODUCED, USED OR DISCLOSED TO OTHERS FOR ANY PURPOSE EXCEPT AS SPECIFICALLY AUTHORIZED IN WRITING BY AN OFFICER OF SULLINS ELECTRONICS.	

<b>SULLINS ELECTRONICS</b>		
DESCRIPTION EDGE CARD, .039 CC		
PART NUMBER -- E -- DHF --		
SIZE <b>C</b>	DWG. NO. C10646	REV B
SCALE: 3:1	SHEET 2 OF 3	

PART NUMBER	POSITIONS	A±.005[±0.13]		B±.005[±0.13]		C±.015[±0.38]		D±.010[±0.25]		E±.020[±0.51]		F±.010[±0.25]	
		INCHES	MM	INCHES	MM	INCHES	MM	INCHES	MM	INCHES	MM	INCHES	MM
__E02DHF__*	2	0.039	1.00	0.170	4.32	0.394	10.01	0.680	17.27	0.994	25.25	0.294	7.47
__E03DHF__*	3	0.079	2.00	0.210	5.32	0.434	11.01	0.720	18.27	1.034	26.25	0.334	8.47
__E04DHF__*	4	0.118	3.00	0.249	6.32	0.473	12.01	0.759	19.27	1.073	27.25	0.373	9.47
__E05DHF__	5	0.157	4.00	0.288	7.32	0.512	13.01	0.798	20.27	1.112	28.25	0.412	10.47
__E06DHF__	6	0.197	5.00	0.328	8.32	0.552	14.01	0.838	21.27	1.152	29.25	0.452	11.47
__E07DHF__	7	0.236	6.00	0.367	9.32	0.591	15.01	0.877	22.27	1.191	30.25	0.491	12.47
__E08DHF__	8	0.276	7.00	0.407	10.32	0.631	16.01	0.917	23.27	1.231	31.25	0.531	13.47
__E09DHF__	9	0.315	8.00	0.446	11.32	0.670	17.01	0.956	24.27	1.270	32.25	0.570	14.47
__E10DHF__	10	0.354	9.00	0.485	12.32	0.709	18.01	0.995	25.27	1.309	33.25	0.609	15.47
__E11DHF__	11	0.394	10.00	0.525	13.32	0.749	19.01	1.035	26.27	1.349	34.25	0.649	16.47
__E12DHF__	12	0.433	11.00	0.564	14.32	0.788	20.01	1.074	27.27	1.388	35.25	0.688	17.47
__E13DHF__	13	0.472	12.00	0.603	15.32	0.827	21.01	1.113	28.27	1.427	36.25	0.727	18.47
__E14DHF__	14	0.512	13.00	0.643	16.32	0.867	22.01	1.153	29.27	1.467	37.25	0.767	19.47
__E15DHF__	15	0.551	14.00	0.682	17.32	0.906	23.01	1.192	30.27	1.506	38.25	0.806	20.47
__E16DHF__	16	0.591	15.00	0.722	18.32	0.946	24.01	1.232	31.27	1.546	39.25	0.846	21.47
__E17DHF__	17	0.630	16.00	0.761	19.32	0.985	25.01	1.271	32.27	1.585	40.25	0.885	22.47
__E18DHF__	18	0.669	17.00	0.800	20.32	1.024	26.01	1.310	33.27	1.624	41.25	0.924	23.47
__E19DHF__	19	0.709	18.00	0.840	21.32	1.064	27.01	1.350	34.27	1.664	42.25	0.964	24.47
__E20DHF__	20	0.748	19.00	0.879	22.32	1.103	28.01	1.389	35.27	1.703	43.25	1.003	25.47
__E21DHF__	21	0.787	20.00	0.918	23.32	1.142	29.01	1.428	36.27	1.742	44.25	1.042	26.47
__E22DHF__	22	0.827	21.00	0.958	24.32	1.182	30.01	1.468	37.27	1.782	45.25	1.082	27.47
__E23DHF__	23	0.866	22.00	0.997	25.32	1.221	31.01	1.507	38.27	1.821	46.25	1.121	28.47
__E24DHF__	24	0.906	23.00	1.037	26.32	1.261	32.01	1.547	39.27	1.861	47.25	1.161	29.47
__E25DHF__	25	0.945	24.00	1.076	27.32	1.300	33.01	1.586	40.27	1.900	48.25	1.200	30.47
__E26DHF__	26	0.984	25.00	1.115	28.32	1.339	34.01	1.625	41.27	1.939	49.25	1.239	31.47
__E27DHF__	27	1.024	26.00	1.155	29.32	1.379	35.01	1.665	42.27	1.979	50.25	1.279	32.47
__E28DHF__	28	1.063	27.00	1.194	30.32	1.418	36.01	1.704	43.27	2.018	51.25	1.318	33.47
__E29DHF__	29	1.102	28.00	1.233	31.32	1.457	37.01	1.743	44.27	2.057	52.25	1.357	34.47
__E30DHF__	30	1.142	29.00	1.273	32.32	1.497	38.01	1.783	45.27	2.097	53.25	1.397	35.47
__E31DHF__	31	1.181	30.00	1.312	33.32	1.536	39.01	1.822	46.27	2.136	54.25	1.436	36.47
__E32DHF__	32	1.220	31.00	1.351	34.32	1.575	40.01	1.861	47.27	2.175	55.25	1.475	37.47
__E33DHF__	33	1.26	32.00	1.391	35.32	1.615	41.01	1.901	48.27	2.215	56.25	1.515	38.47
__E34DHF__	34	1.299	33.00	1.430	36.32	1.654	42.01	1.940	49.27	2.254	57.25	1.554	39.47
__E35DHF__	35	1.339	34.00	1.470	37.32	1.694	43.01	1.980	50.27	2.294	58.25	1.594	40.47
__E36DHF__	36	1.378	35.00	1.509	38.32	1.733	44.01	2.019	51.27	2.333	59.25	1.633	41.47
__E37DHF__	37	1.417	36.00	1.548	39.32	1.772	45.01	2.058	52.27	2.372	60.25	1.672	42.47
__E38DHF__	38	1.457	37.00	1.588	40.32	1.812	46.01	2.098	53.27	2.412	61.25	1.712	43.47
__E39DHF__	39	1.496	38.00	1.627	41.32	1.851	47.01	2.137	54.27	2.451	62.25	1.751	44.47
__E40DHF__	40	1.535	39.00	1.666	42.32	1.890	48.01	2.176	55.27	2.490	63.25	1.790	45.47
__E41DHF__	41	1.575	40.00	1.706	43.32	1.930	49.01	2.216	56.27	2.530	64.25	1.830	46.47
__E42DHF__	42	1.614	41.00	1.745	44.32	1.969	50.01	2.255	57.27	2.569	65.25	1.869	47.47
__E43DHF__	43	1.654	42.00	1.785	45.32	2.009	51.01	2.295	58.27	2.609	66.25	1.909	48.47
__E44DHF__	44	1.693	43.00	1.824	46.32	2.048	52.01	2.334	59.27	2.648	67.25	1.948	49.47
__E45DHF__	45	1.732	44.00	1.863	47.32	2.087	53.01	2.373	60.27	2.687	68.25	1.987	50.47
__E46DHF__	46	1.772	45.00	1.903	48.32	2.127	54.01	2.413	61.27	2.727	69.25	2.027	51.47
__E47DHF__	47	1.811	46.00	1.942	49.32	2.166	55.01	2.452	62.27	2.766	70.25	2.066	52.47
__E48DHF__	48	1.85	47.00	1.981	50.32	2.205	56.01	2.491	63.27	2.805	71.25	2.105	53.47
__E49DHF__	49	1.89	48.00	2.021	51.32	2.245	57.01	2.531	64.27	2.845	72.25	2.145	54.47
__E50DHF__	50	1.929	49.00	2.060	52.32	2.284	58.01	2.570	65.27	2.884	73.25	2.184	55.47



\* CONSULT FACTORY FOR AVAILABILITY



RoHS COMPLIANT

# CUSTOMER COPY

UNLESS OTHERWISE SPECIFIED: DIMENSIONS ARE IN INCHES[MM]		DATE	NAME
TOLERANCES: ANGULAR: ± 1° XX = ± .02 [ .508] .XXX = ± .005 [ .1270] XXXX = ± .0005 [ .0127] PARENTHEICAL INFORMATION IS FOR REFERENCE ONLY		12/19/2005	HT
THE INFORMATION HEREIN CONTAINS PROPRIETARY INFORMATION OF SULLINS ELECTRONICS AND IS NOT TO BE REPRODUCED, USED OR DISCLOSED TO OTHERS FOR ANY PURPOSE EXCEPT AS SPECIFICALLY AUTHORIZED IN WRITING BY AN OFFICER OF SULLINS ELECTRONICS.		DESCRIPTION	
INTERPRET DIMENSIONS AND GEOMETRIC TOLERANCING PER: ANSI Y14.5-1984		EDGE CARD, .039 CC	
SIZE DWG. NO		PART NUMBER	
C		__E__DHF__	
C10646		REV B	
SCALE: 3:1		SHEET 3 OF 3	